

Shops 1 & 2 Northern
Road, Wisemans Ferry

02 45664385
info@ferryartists.org

The Ferry Artists Gallery

Newsletter

President: Heather Winch
4566 4465
Vice President: Jenni Mae
Clissold 4566 8154
Secretary: Jacki Dessaix
4566 3195
Treasurer: Joanne
Ruckman 4575 4076
Newsletter: Mellissa
Read-Devine 45790 245
readdevine@aol.com

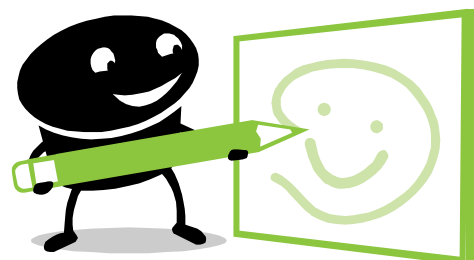
Dates to Remember

- 10 September
Next Committee
Meeting
- 20 October New
Exhibition "Mutts
& Moggies"

Presidents Report (AGM)

The gallery has had a brilliant year. Despite the economic downturn we managed to rise above the doomsayers and have bigger takings in some months than in previous years.

We have had some great exhibitions – "Distractions", a three group show with Janeane Moore, Paul Turner and Jenni Mae Clissold brought a new energy into the gallery and financially it was very successful also.



We had our 10th birthday celebrations; and other shows such as "Conviction" were very well received. We also had new signs installed. A good time to thank our talented and hardworking display team – Marge Curson, Judy Brownlie and Joanne Ruckman as well as other helpers who made the exhibitions both look good and be enjoyable to attend.

An ongoing project – our Unity Poles, are very close to nearing completion. It has been over three years since its inception, and this year there has been a lot of work and dare I say, stress regarding its future. A special mention of thanks goes to Geoff Hawkins and Jacki Dessaix as well as Heather and Jenni Mae.

Talking about stress, everyone's favourite job "The Roster" has been brilliantly coordinated by both Heather Winch and Janeane Moore. This is a vital part of running the gallery and my thanks can never be enough.

Karlene Brummer has brought insight and inspired decisions in promoting the gallery, Jenni Mae invaluable for her quiet and important work behind the scenes and wonderful invitation & flyer design. Janice Hunt has kept the gallery solvent in procuring grants and keeping the gallery running and Joanne Ruckman has been a vital *artery* – without someone who can organise the finances, we may as well shut the doors.

Trudi Nisbett and Adelaine Hancock have been relied upon to achieve important work behind the scenes, I thank you both. Tony Simpson has been a *rock*, and always a source of good advice. Thankyou to Peter Kelly for his dedication to seeing our website grow into a useful and important tool of promotion & sales.

I'm trying to mention everyone by name, but I'm sure to miss someone out so I apologise.

Everyone on the committee have been responsible for the gallery running as well as it has been, as well as all members who come in for roster duty, support our exhibitions and social events, who pass on a flyer and tell someone of our brilliant gallery.

Thankyou all and I look forward to the coming years as a proud member of The Ferry Artists Gallery

Mellissa Read-Devine

Welcome to New Members

Stephanie Martin

Karl Doyle

Rhys Schofield

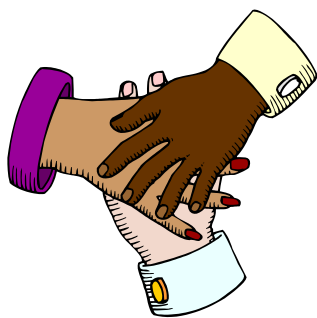
Welcome to the New (and not so new) Committee Members for 2012-2013

PRESIDENT - HEATHER WINCH
VICE PRESIDENT - JENNI MAE CLISSOLD
TREASURER - JOANNE RUCKMAN
SECRETARY - JACKI DESSAIX
GENERAL COMMITTEE MEMBERS
MELLISSA READ DEVINE
KARLENE BRUMMER
JANICE HUNT
TONY SIMPSON

Unity Poles

Unity Poles you say? What are they? Over 3 years has passed since it was suggested by some very forward thinking artists., we can finally say that with the help of the local community & schools , artists Victoria Peel and Col Lyons, through generous grants by Hornsby Council , materials from Bunnings Dural & Dulux Paints, The Unity Poles have now been installed and await a party!

Head on down towards the new BMX track by the river. Opening ceremony details TBA

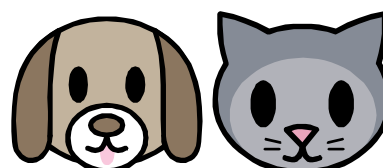


“Mutts & Moggies” Call for Artists



As suggested by the Cats of Wisemans Ferry, (actually they just wanted it about them, but to be politically correct, we at the Gallery thought we should include both canine as well as feline content..

This gives all our members lots of time to be inspired and work towards something that would go with the theme. Remember, as artists you can interpret it any way you like.



Friday 7th &
Saturday 8th
September

Ebenezer Public School
531 Sackville Rd Ebenezer



**Ebenezer Public School P&C are holding
their annual Art Show.**

We are inviting artists to exhibit their artworks,
including drawings, paintings, sculptures & ceramics
(other forms may be considered on enquiry).

**ENTRY FORMS NEED TO BE RETURNED BY
FRIDAY 31st AUGUST 2012.**

**For more information please contact Kim on
45790121 or ajkjones@tpg.com.au**



Recent Art in Sydney - Impressions from Tony Simpson

Bangarra Dance - Terrain at the Opera House

Kamisaka Seeka Rinpa Art and Design NSW Art Gallery

Art, whatever its form, works best when it distils mind, body, spirit and emotion and successfully conveys some of that realisation to us the viewer.

Over the weekend of 11 -12 August I had the opportunity to visit two culturally diverse art forms which were of significance (apart of course from Mel and Triscias excellent Exhibition opening at the Watch House, Balmain on Friday evening 10 August)

Both drew their inspiration from harmonies and complexities in nature.

Indigenous Australian creators and dancers in a performance steeped in rich indigenous cultural meaning, drew inspiration from a rainsoaked and revitalised Lake Eyre. As I immediately texted a friend who had not been able to share the performance.....

.... Terrain was,

"Dance beyond body .

Articulate and comprehensible beyond words.

Spiritualized earth. Earthen spirituality. Radiant anguished realization. Lyrical stillness.

Powerfully, sensuously gentleA Cathartic renewal "

.....and at the Art Gallery of NSW..... Rinpa

The sheer exuberance and physicality of the Bangarra Dance was contrasted by the almost ascetic restraint of the classical Japanese work and design of the Rinpa tradition. This tradition finds its expression in painting, textiles, lacquer ware and ceramics and draws from an ancient heritage dating to the 8th century, finding its home in the ancient capital Kyoto.

The sublime power of emotional restraint expresses in its purity in harmonised, clean, crisp images; moving to soaring heights. The Japanese Rinpa is such a contrast in form and expression to the exuberance of the Australian dance but equally uplifting: they both shared a transcendent essence.

The Dance performances are finished in Sydney but can be caught regionally and in other capitals

The Rinpa exhibition is on at the NSW Gallery until the 26 August



Do You enjoy our Exhibitions?



Do you come to our exhibition openings? If not why not? The Gallery needs motivated volunteers to help be on an exhibition subcommittee to help make our exhibitions even more brilliant.. This can be just for one show, or all of them! All input and ideas are welcome. Please contact your favourite committee member.